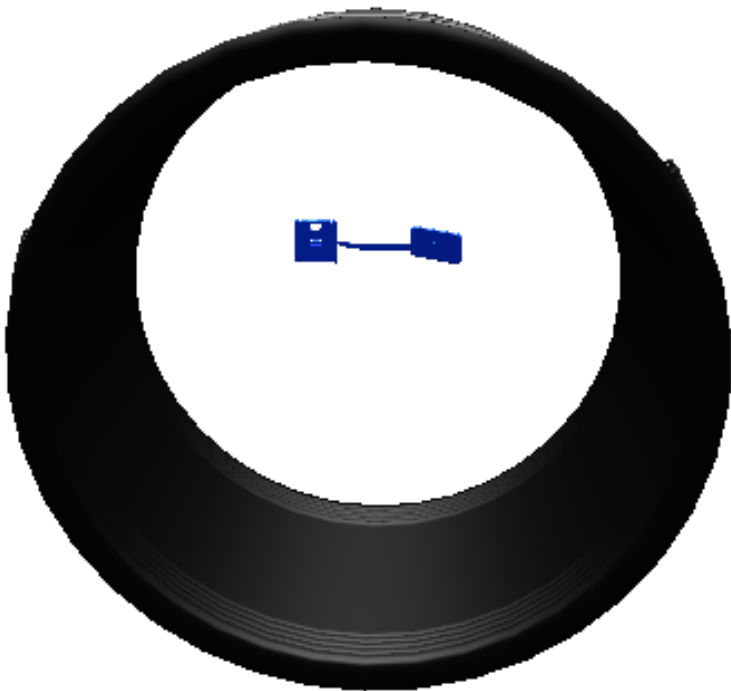


KERA.MAT

COUPLING.BASIC TYPE 2B



CLAMPING RANGE

|           |           |           |         |         |         |         |         |         |         |
|-----------|-----------|-----------|---------|---------|---------|---------|---------|---------|---------|
| 120-137   | 140-165   | 175-200   | 225-250 | 245-275 | 285-310 | 305-335 | 335-360 | 355-385 | 400-425 |
| 420-445   | 460-490   | 480-510   | 530-560 | 570-600 | 590-620 | 670-700 | 705-735 | 820-850 | 920-950 |
| 1060-1090 | 1247-1277 | 1430-1470 |         |         |         |         |         |         |         |

TKL  
240

MEASUREMENTS

| Nominal size | Clamping range             | Width | Thickness | Tightening torque |
|--------------|----------------------------|-------|-----------|-------------------|
| DN           | outer d <sub>3</sub><br>mm | mm    | mm        | Nm                |
| 250          | 305-335                    | 185   | 9,2       | 10                |

FURTHER CHARACTERISTICS

|                  |                    |
|------------------|--------------------|
| Package Quantity | Carton/Lattice box |
|------------------|--------------------|

BRIEF DESCRIPTION

\* Normal strength:  
watertight to 2.5 bar, up to DN 600

\* Extra strength:  
watertight to 1.0 bar, for DN 700 and larger  
watertight to 2.5 bar, up to DN 600

COUPLING.Basic is used to connect 2 pipe spigots in nominal sizes DN 100 to DN 500. M-seals can be ordered in 2 versions: type 2A (normal type) and type 2B (wider version)

M-seals with compensation elements (bushes) in the sizes 4, 8, 12, 16, 24 and 32 mm for joining two pipe spigots with different external diameters from 160 to 1399 mm.

RE-SYSTEM

future sewer inspections.

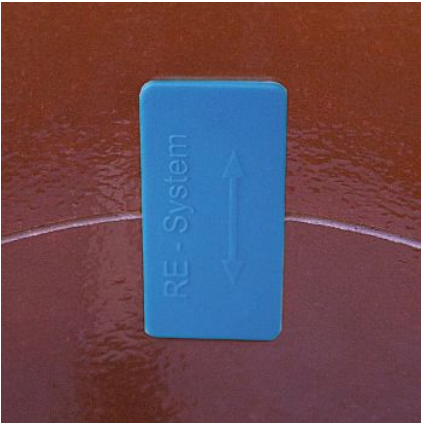
Furthermore, customers can be sure that the flexible coupling they ordered has actually been installed. During assembly of the flexible coupling, the coupling “clip” is placed at the pipe crown between the pipe ends to be connected.

PRODUCT ADVANTAGES

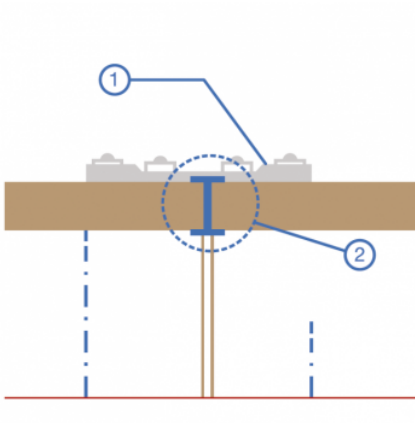
- Unambiguous classification of the joint
- Prevention of unnecessary rehabilitation costs resulting from misinterpretations in future sewer inspections
- Quality assurance: the type of flexible coupling can be checked from the inside
- Easy to install
- No extra costs
- The ID is in the pipe crown, close to the pipe wall
- Resistant to high-pressure flushing



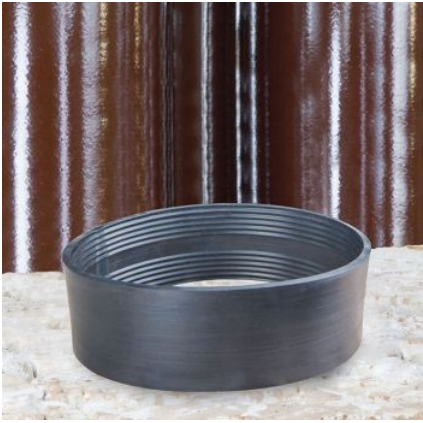
Flexible Couplings Type 2B



RE-system (blue) for stainless steel coupling and flexible couplings Type 2B

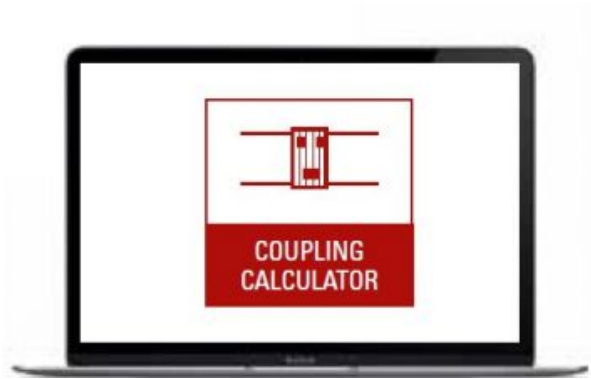


1. Flexible coupling  
2. Re-system blue/yellow



A-RING

TOOLS & SERVICES



COUPLING CALCULATOR >

For connecting spigots, the Coupling Calculator works out the type of coupling and, if necessary, the quantity and type of compensating rings required.

KERA.MAT MANSCHETTE.BASIC TYP 2B, SPECIAL SIZES

| Clamping range external, d3, mm | Width mm | Thickness mm | Tightening torque |
|---------------------------------|----------|--------------|-------------------|
| 190-215                         | 150      | 7,7          | 10                |
| 200-255                         | 150      | 7,7          | 10                |
| 265-290                         | 150      | 7,7          | 10                |
| 295-320                         | 185      | 9,2          | 10                |
| 315-345                         | 185      | 9,2          | 10                |
| 385-410                         | 185      | 9,2          | 13                |
| 405-430                         | 185      | 9,2          | 13                |
| 435-465                         | 185      | 9,2          | 13                |
| 495-525                         | 185      | 9,2          | 13                |

|           |     |     |    |
|-----------|-----|-----|----|
| 510-540   | 185 | 9,2 | 13 |
| 520-550   | 185 | 9,2 | 13 |
| 555-580   | 185 | 9,2 | 13 |
| 610-640   | 185 | 9,2 | 20 |
| 630-660   | 185 | 9,2 | 20 |
| 650-680   | 185 | 9,2 | 20 |
| 685-715   | 185 | 9,2 | 20 |
| 730-760   | 185 | 9,2 | 20 |
| 750-780   | 185 | 9,2 | 20 |
| 800-830   | 185 | 9,2 | 20 |
| 820-850   | 185 | 9,2 | 20 |
| 845-875   | 185 | 9,2 | 20 |
| 860-890   | 185 | 9,2 | 20 |
| 900-930   | 185 | 9,2 | 20 |
| 920-950   | 185 | 9,2 | 20 |
| 945-975   | 185 | 9,2 | 20 |
| 970-999   | 185 | 9,2 | 20 |
| 1000-1099 | 185 | 9,2 | 20 |
| 1100-1199 | 185 | 9,2 | 20 |
| 1200-1299 | 185 | 9,2 | 20 |

## INSTALLATION INSTRUCTIONS



Here you will find a detailed explanation for installation on the construction site.

[TO THE INSTRUCTIONS >](#)